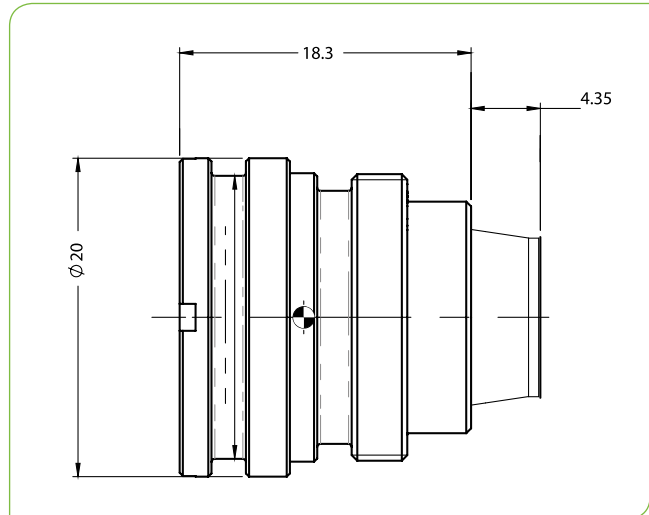


# SupIR 9.2mm f/1.0, Fixed Athermalized 680407

TYPICAL ICD\*



LWIR | 1-FOV

HFOV	320x240	384x288	640x480	672x544
17μ	34.6°	41.9°		
12μ	24.2°	29.1°	50.0°	52.8°
10μ	20.1°	24.2°	41.0°	43.2°

Property	Value				
<b>Optical</b>					
Focal Length	9.2mm				
F#	1.0				
Average transmission (8-12μm)	92% (HD) / 84% (HC)				
Back Focal Length	6.85mm in air				
<b>Mechanical</b>					
Focus Mechanism	Fixed				
Depth of Field	4m to infinity				
Focus Range	0.5m to infinity				
Weight	see configurations table below				
Max. Dimensions	see configurations table below				
<b>Environmental</b>					
Operation Temperature	-40°C to +80°C				
Storage Temperature	-55°C to +85°C				
Sealing	IP 67 front element only				
<b>Configurations</b>	<b>Weight (gr)</b>	<b>Dimensions</b>	<b>BWD**</b>	<b>Thread</b>	<b>Coating</b>
680407-001	12.8	Ø20.0mm x 18.3mm	4.35	M18x0.5	HD
680407-002					HC
680407-003	13.4	Ø19.95mm x 14.4mm	6.93	M19x0.5	HD
680407-004					HC

\* The ICD drawing provided here is primarily a representation and may not accurately reflect the product's actual dimensions and specifications. For precise integration specifications contact your local sales representative.

\*\* The BWD value is calculated for a unique detector setup with varying sealing windows in terms of thickness and material. For more details, contact your local sales representative.